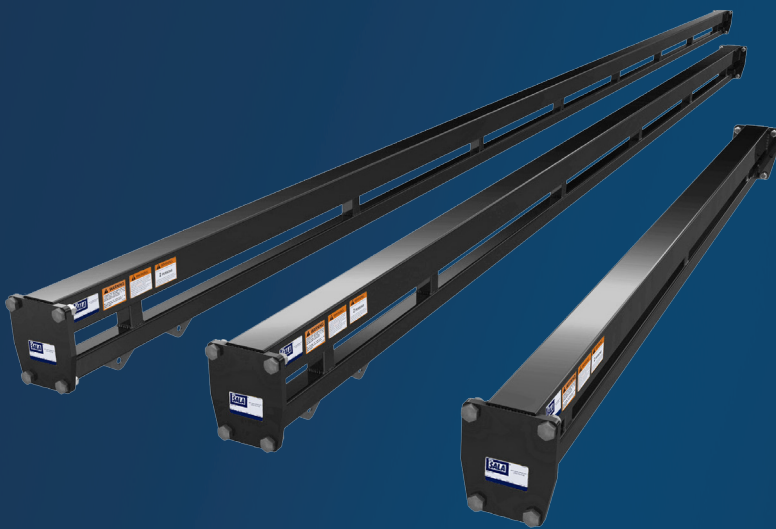


**DBI-SALA
GLYDE-SAF™ HD**

**COST EFFECTIVE.
EFFICIENT.
RELIABLE.**



Reduction in system complexity and installation costs, allows for longer spans between supports without lifeline sag



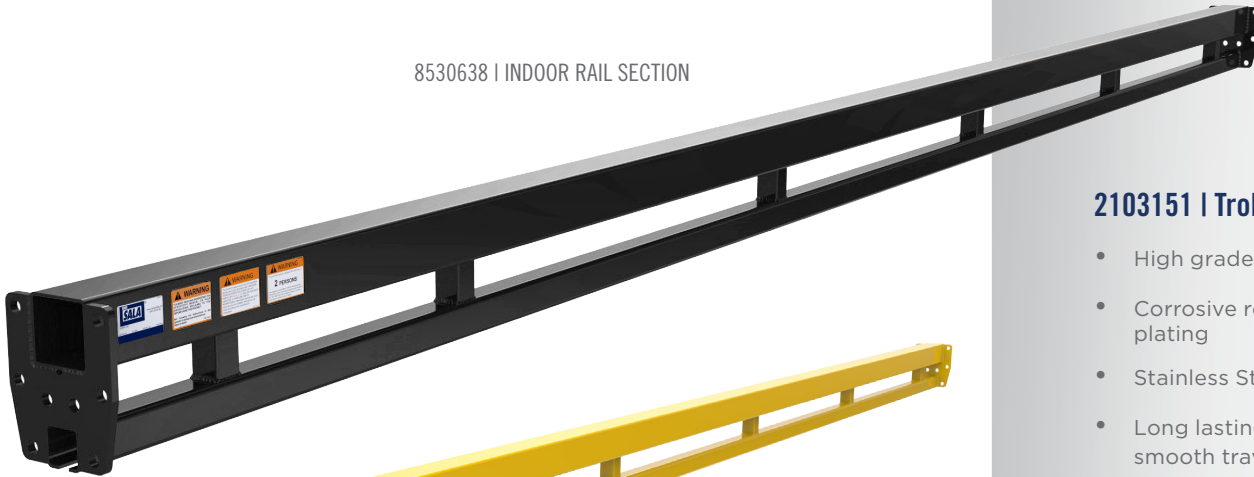
DBI-SALA GLYDE-SAF™ HD

Glyde-Saf™ HD (Heavy Duty)

Glyde-Saf™ HD is the ultimate in overhead fall protection on the market. The unique enclosed overhead track system enables smooth and uninterrupted travel for one or two users while working at heights. This rigid rail system can be installed for use indoors or outdoors to support aircraft and vehicle maintenance hangers, manufacturing facilities, rail car applications, warehousing and storage areas, performing art centers and arenas, and other related activities.

Unlike traditional cable horizontal lifeline systems, this rigid rail system eliminates sag distance and reduces overall fall clearance from the anchor point to the ground. Glyde-Saf™ HD systems are rated to support retractable devices with an average arresting force of no greater than 900 lbs. (4kN).

8530638 | INDOOR RAIL SECTION



8530688 | OUTDOOR RAIL SECTION



LONGER DISTANCES BETWEEN SUPPORTS

Glyde-Saf™ HD is capable of unlimited runs with an overall span length of 50 ft. (15.2m), and allows less fall clearance as compared to a wire cable system. The system allows for longer spans without sag between supports, providing a reliable, cost-effective way to reduce the risk of injury while working at heights.

Rail Sections- Indoor and Outdoor

- High grade steel construction
- 2-user rated, 420 lbs. (190.5 kg)/user
- Max allowable span is 50 ft. (15.2m)
- Allowable 6 ft. (1.8m) cantilever
- Standard rail lengths: 20 ft. (6.1m) and 10 ft. (3.0m)
- Indoor version coated with Black e-coat
- Outdoor version coated with Black e-coat and Yellow Powder Coat

2103151 | Trolley Assembly

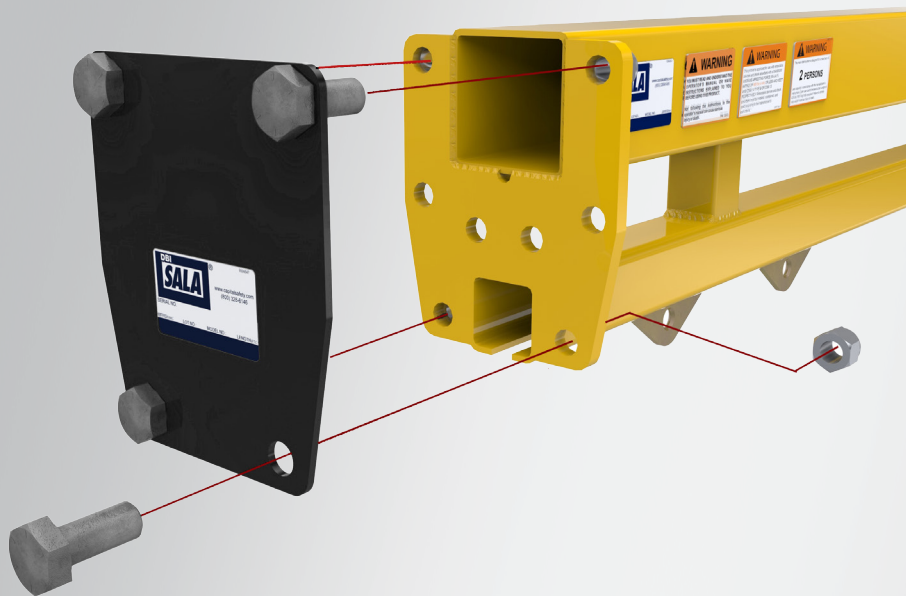
- High grade steel construction
- Corrosive resistant, zinc plating
- Stainless Steel wheel bearings
- Long lasting nylon wheels for smooth travel



Capital Safety can provide custom solutions to meet unique application needs. Whether you're looking for mounting bracket design assistance or custom lengths, Capital Safety can help to meet your needs. Please contact us for more information.

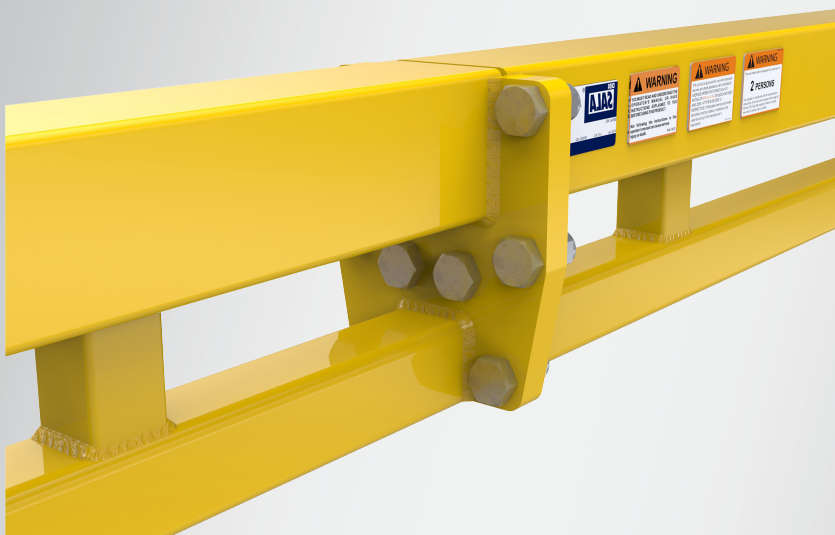
Compliant to OSHA 1926.502, ANSI Z359.6

DBI-SALA GLYDE-SAF™ HD



8530639 | End Stop Plate Kit

- Kit contains a powder coated plate and mounting hardware for attaching to each end of the rail assemblies
- High grade steel construction



8530635 | Seam Kit

- High grade, zinc plated hex head bolts
- High grade, nylon top insert, zinc plated hex nuts

capital
SAFETY

Capital Safety

USA: 800 328 6146

www.capitalsafety.com info@capitalsafety.com

CANADA: 800 387 7484

csgccustomerservice@capitalsafety.com